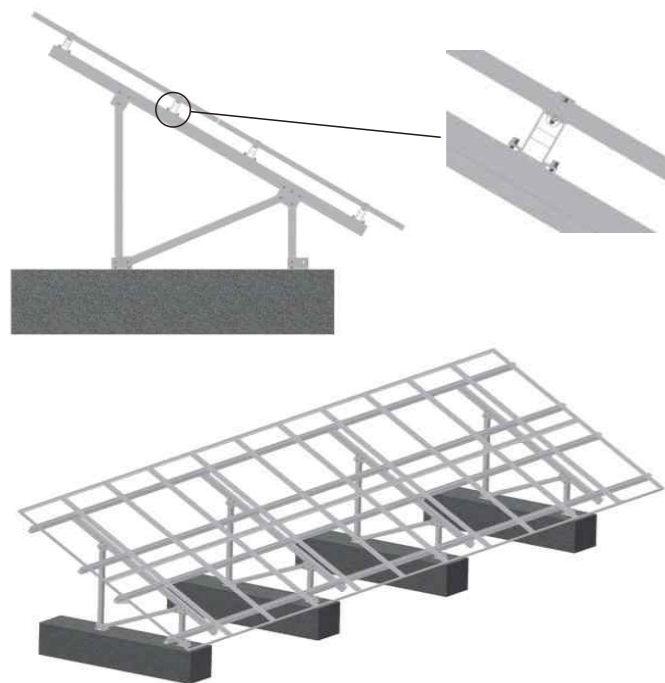


## DUAL-POST GROUND SOLAR MOUNTING SYSTEM

### 双立柱地面铝合金及钢支架

#### 性能优势与图解 Performance advantage & graphic



**产品性能:**  
 安装环境: 各种土质地面  
 基础: 螺旋桩、水泥桩、灌注桩、四脚桩  
 材质: Q235B / Q345B & 铝合金AL6063-T5 / 6005-T5  
 安装角度: 根据设计要求  
 适用组件: 边框或无边框组件  
 阵列: 根据设计要求  
 组件方向: 横向 / 纵向  
 设计风速: 45m/s  
 雪载荷: 1.4KN/m<sup>2</sup>  
 使用年限: 25年

**Product performance:**  
 Location: Partial Ground  
 Foundation: Screw Pile/Concrete grade/Filling Pile/X-shape pile  
 Material: Q235B / Q345B & AL6063-T5 / 6005-T5  
 Tilt angles: As Designed  
 Module: Any Panel  
 Layout: As Designed  
 Panel Orientation: Landscape/Portrait  
 Wind Speed: 45m/s  
 Snow Load: 1.4KN/m<sup>2</sup>  
 Useful Life: 25 years



美观  
Good Appearance



简便易装  
Easy and Flexible Installation



多样化设计  
Diversified Application



重量轻  
Light Dead-weight



节省安装材料  
The mounting system materials are saved

#### 零件展示 Parts display



斜梁组件  
Member Assembly



底脚  
Foot



导轨及连接杆  
Rail Splice Assembly



边压块组件  
End-Clamp Kit



中压块组件  
Mid-Clamp Kit



紧固件  
Fastener

## DUAL-POST GROUND SOLAR MOUNTING SYSTEM

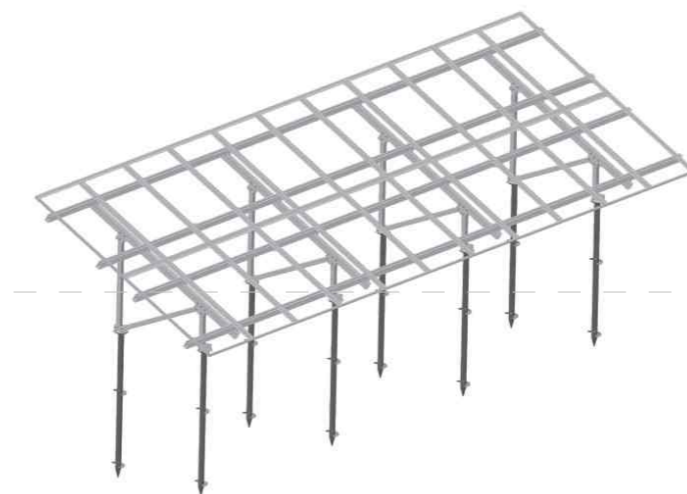
### 双立柱地面铝合金及钢支架

#### 结构变形 Structural deformation



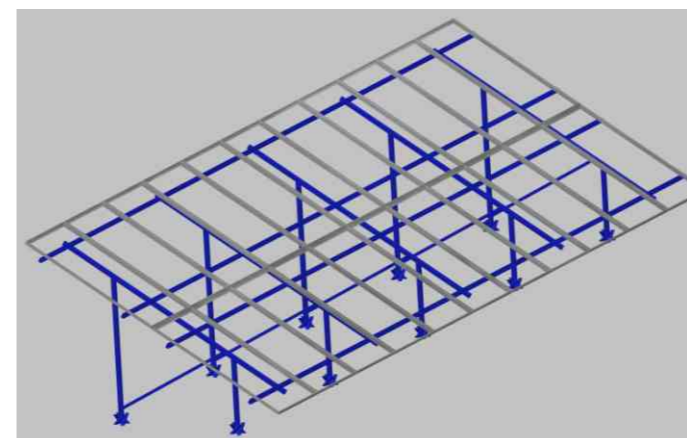
**结构变形1:**  
 基础: 水泥墩基础  
 组件放置: 横放4x10

**Structural deformation1:**  
 Basis: Concrete Grade  
 Component placement: Landscape4x10



**结构变形2:**  
 基础: 螺旋桩  
 组件放置: 竖放2x10

**Structural deformation1:**  
 Basis: Screw Pile  
 Component placement: Portrait2x10



**结构变形3:**  
 基础: 四脚底座  
 组件放置: 竖放2x11

**Structural deformation1:**  
 Basis: X-shape Pile  
 Component placement: Portrait2x11